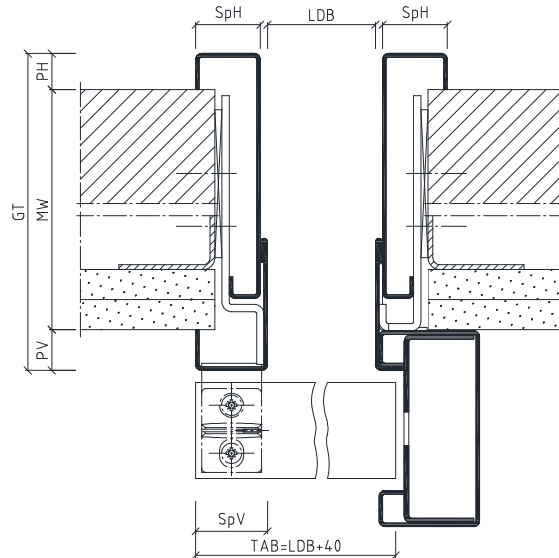


Included in scope of delivery:

- Sliding door frame LineaOutside 2 part split with mounted overhead track
- Bended flat steel anchor (mounted)
- LineaOutside accessory set



wSvdW for brick / stud walls

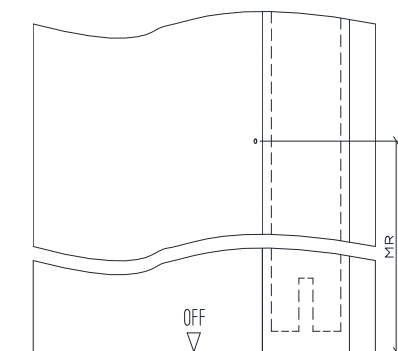
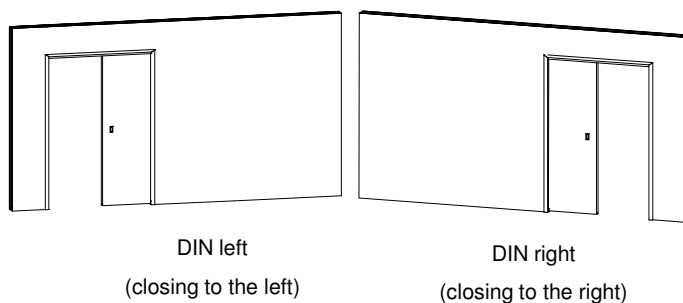
To be supplied by the customer:

- Drilling screws for stud walls
- Screws and dowels for brick walls
- Solid padding
- Door leaf

- GT = Total depth
 LDB = Clearance width
 LDH = Clearance height
 MW = Receiving opening
 OFF = Finished floor level
 PH = Backbend back
 PV = Backbend front
 SpH = Architrave back
 SpV = Architrave front

Detail: Metre mark

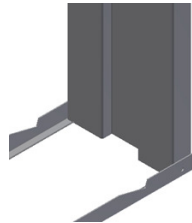
Metre mark from OFF = 1000mm



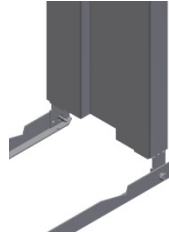
Spacer rails

Spacer rails are transportation aids, which are fastened at the bottom of the steel frame to the side parts. They can be used to aid installation in the case of primed frames and should be removed directly afterwards. In the case of powder coated frames the spacer rails must be removed before installation takes place.

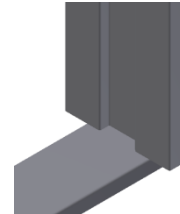
Spacer rail of a primed frame



Spacer rail of a powder coated frame



Transport guard of all frames



Please note:

The profile forms and measurements can differ from those illustrated in the installation instructions.

If the frames are used in combination with fire or sound protection doors, the installation and accessory details of the certificate owner must be followed!

Further installation tips can be found in the TTZ installation guidelines at www.BestOfSteel.de or:

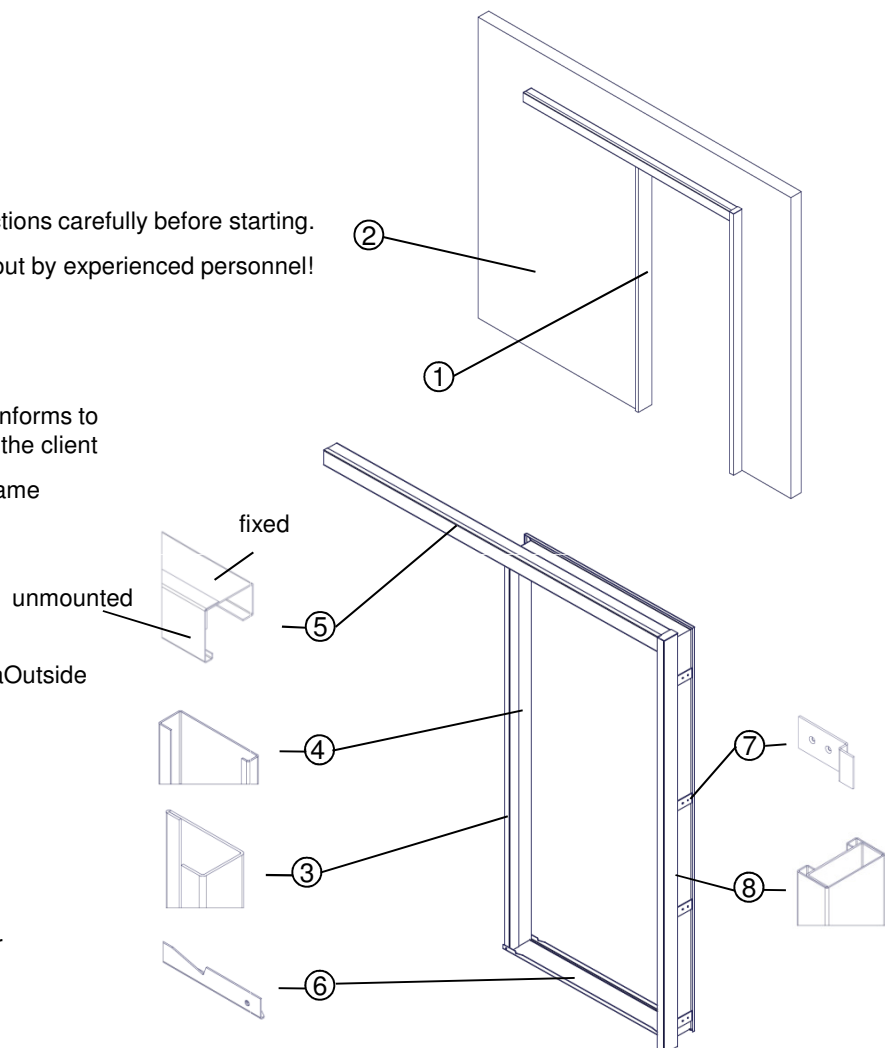


Please note: Read the instructions carefully before starting.
Installation should be carried out by experienced personnel!

Before installation:

- Check that the steel frame conforms to the planning specifications of the client
- Check the angularity of the frame

- (1) Sliding door frame LineaOutside
- (2) Wall
- (3) Front part
- (4) Back part
- (5) Track case (2 parts)
- (6) Transport guard
- (7) Bended flat steel anchor
- (8) Entry profile



These installation instructions do not include static information.

Best Of Steel | 2

Attention: Before installation follow instructions for transport guards (see page 2)!

1. The frame is delivered assembled. Separate the front part (3) from the back part (4).

2. Position the front part (3) in the wall opening and align according to the metre mark. (For metre mark explanation see page 1.)

3. Fix the bended flat steel anchor (7) of the front part (3) to the wall (2), using solid padding (not included). Align vertically and horizontally using a spirit level.

- 4a. **Stud walls:**
Join the aligned front part (3) through the given holes in the bended flat steel anchors (7) to the UA profile using drilling screws (not included, 2 screws per anchor, offset diagonally).

- 4b. **Brick walls:**
Once the front part (3) is positioned and aligned, mark where the holes have to be drilled. Then remove the front part (3), drill the holes and insert the dowels (not included). Reposition the front part (3) in the wall opening, align and fasten (2 screws per anchor, offset diagonally).

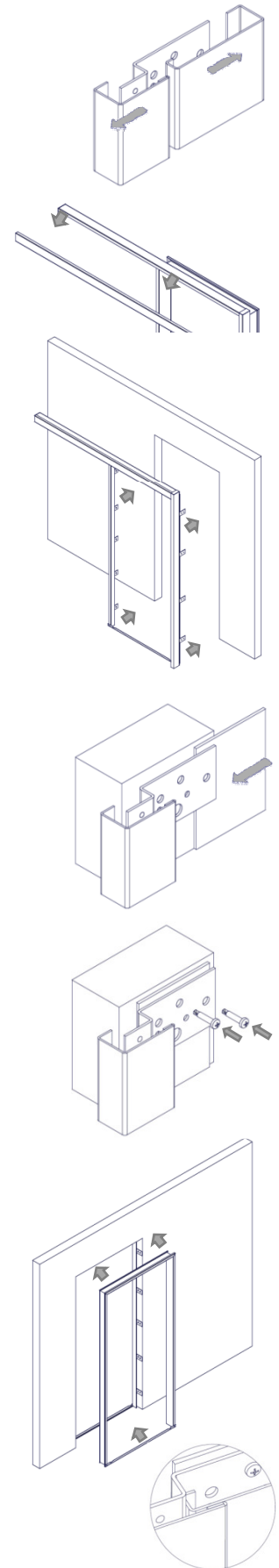
5. Join the front (3) and back (4) part. When pushing the back part into place, make sure that it goes between the bended flat steel anchors (7) and the front part (3). The backbend (PH) of the back part (4) must lie on the brick or stud wall.

Fasten the track case (5, fixed) securely to the wall or the UA profile of the stud wall using the holes provided.

6. Finally, remove the transport guards (6).

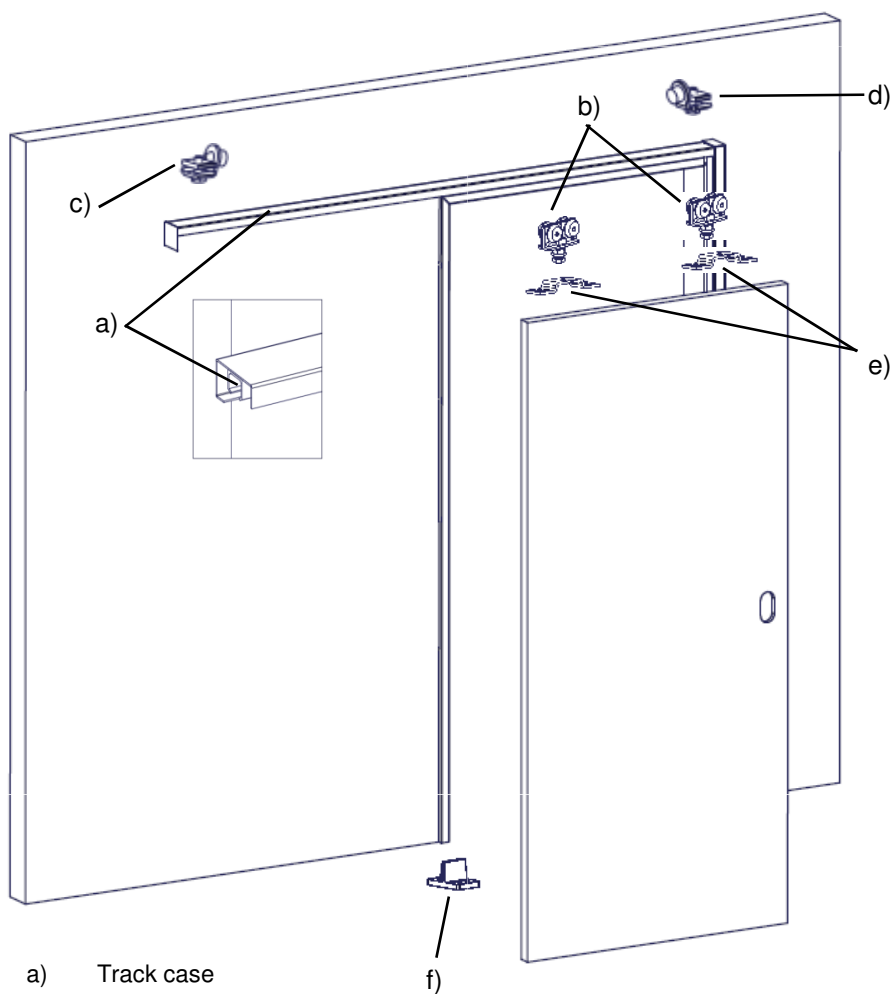
7. **Attention:** Once the sliding door is mounted (page 4), attach the track case cover (5, unmounted).

Note: A backfilling of the frame with mortar is not necessary. The frame can be backfilled with mineral wool for sound protection requirements.



Mounting the sliding door:

- 1) Hang the carriage (b) in the track case (a).
- 2) Screw the bearing flange (e) onto the sliding door leaf.
- 3) Hang the door using the bearing flanges (e) onto the carriage (b) and adjust the door leaf to the right height by turning the adjustment screws. The gap between the door leaf and the frame can be regulated by using the slotted holes of the bearing flanges (e).
- 4) Push the front and back rail stops (c and d) into the track case (a) in the desired position.
- 5) The guiding pin (f) should be aligned with the mounted door leaf and fastened to the floor at the level of the side part.



- a) Track case
- b) Carriage
- c) Front rail stop
- d) Back rail stop
- e) Bearing flange
- f) Guiding pin