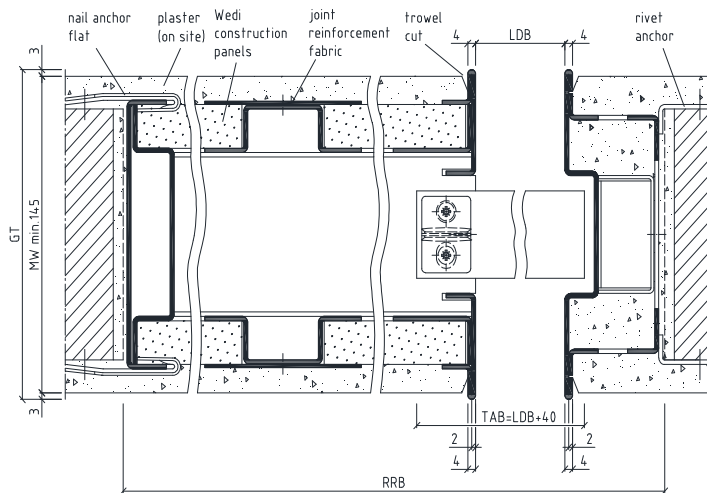


Included in scope of delivery:

- LineaCompact Sino sliding door frame with mounted overhead track
- Rivet anchors
- Flat nail anchors (separate)
- Wedi construction panels
- Joint reinforcement fabric
- LineaCompact Sino accessory set

To be supplied by customer:

- Fastening for the rivet and nail anchors (dowels and screws)
- Door leaf



- GT = Total depth
- MW = Receiving opening
- LDB = Clearance width
- RRB = Structural wall opening width
- PV = Backbend front
- PH = Backbend back
- OFF = Finished floor level

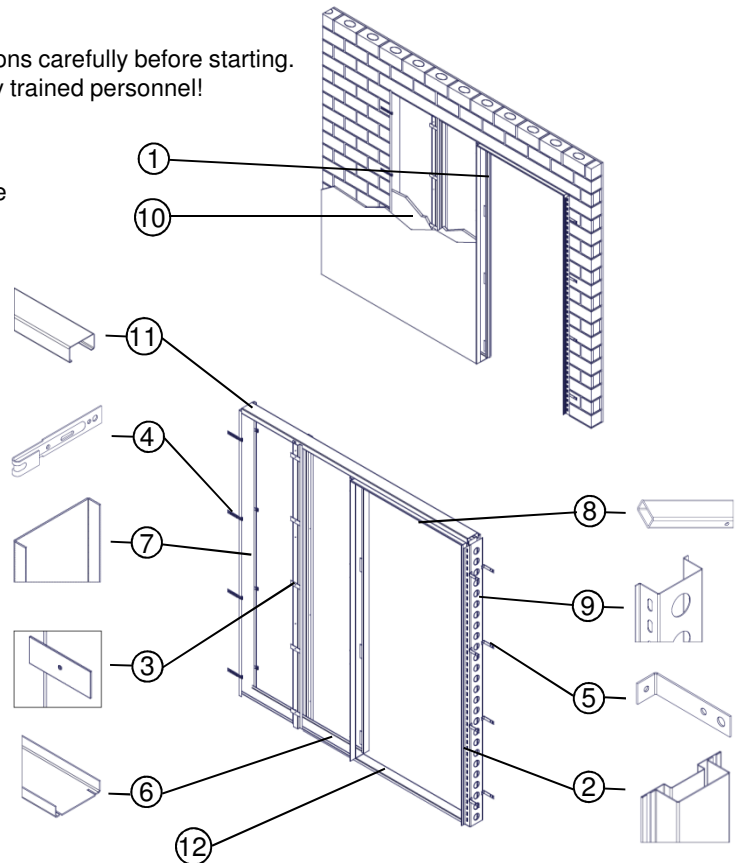
oISidW for brick walls

Please note: Read the installation instructions carefully before starting. Installation should be carried out by suitably trained personnel!

Before installation:

- Check that the steel frame conforms to the planning specifications of the client
- Check the angularity of the frame

- (1) Sliding door frame LineaCompact Sino
- (2) Entry profile
- (3) Retaining plate
- (4) Nail anchor (flat)
- (5) Rivet anchor
- (6) Floor profile
- (7) Stud closure profile
- (8) Inspection cover strip
- (9) Bracing profile
- (10) Wedi construction panel
- (11) Overhead track
- (12) Spacer rail

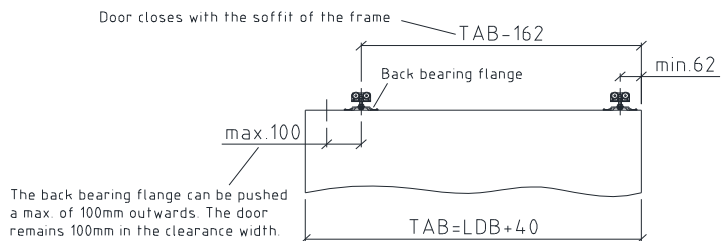


These installation instructions do not include static information.

Best Of Steel | 1

Example: Door stop position

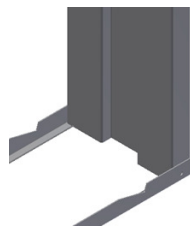
Attention: Only for sliding doors equipped with Tiger ALU 80 and timber door leaves.



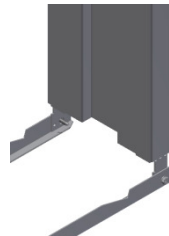
Spacer rails:

Spacer rails are transportation aids, which are fastened at the bottom of the steel frame to the side parts. They can be used to aid installation in the case of primed frames and should be removed directly afterwards. In the case of primed frames the spacer rails must be removed before installation takes place.

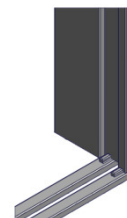
Spacer rail of a primed frame



Spacer rail of a powder coated frame



Transport guard of all frames

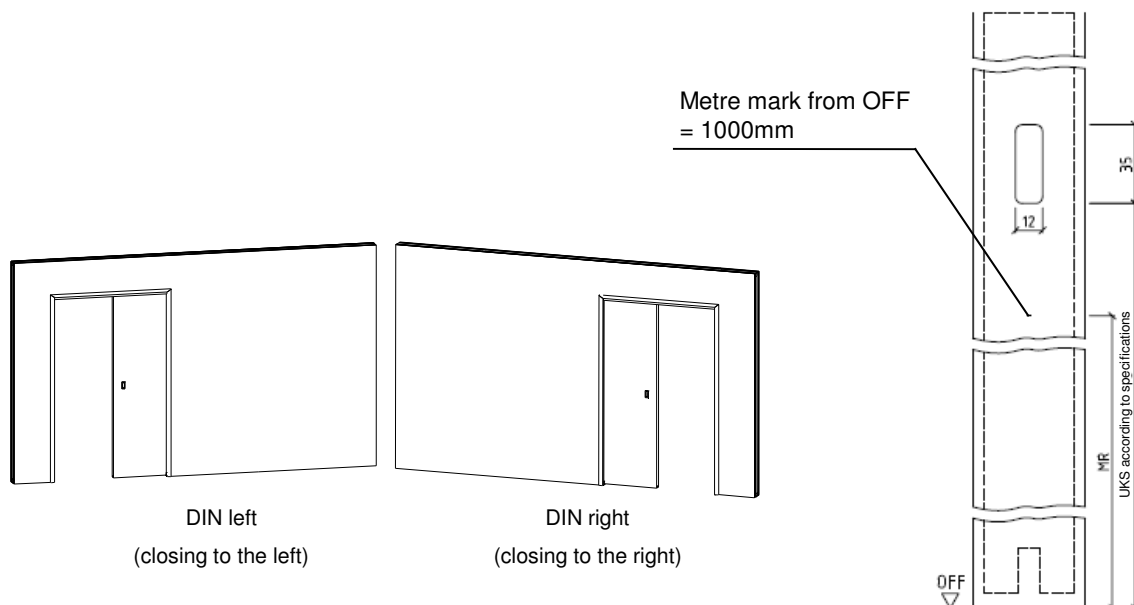


Please note:

The profile forms and measurements can differ from those illustrated in the installation instructions.

If the frames are used in combination with fire or sound protection doors, the installation and accessory details of the certificate owner must be followed!

Detail metre mark:



The transport packaging is disposed of by BOS Best Of Steel in cooperation with Zentek (within Germany).

Attention: The frame is delivered assembled!

1. Remove the Wedi construction panels (10) from the frame (1). Move the retaining plate (3) into an upright position.

2. Reposition the back rail stop, which can be found in the overhead track (11) (optional). The position depends on how the door should stand in the clearance (see installation of the door leaf, page 4).

Attention: The position of the back rail stop can only be corrected at this stage, it is later no longer possible.

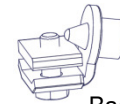
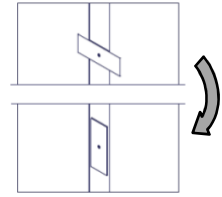
3. Remove the spacer rails (12) from underneath the sliding door frame (1). Next push the sliding door frame (1) into the wall opening and align according to the metre mark (for metre mark explanation see page 2).

4. Align the sliding door frame (1) vertically and horizontally using a spirit level and fix. Make sure that the sliding door frame (1) has an even distance to the wall when fixed.

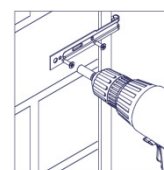
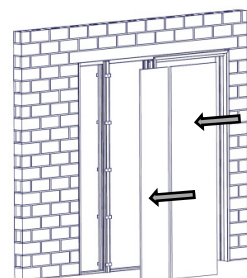
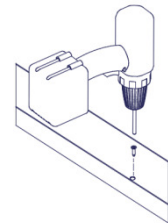
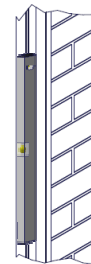
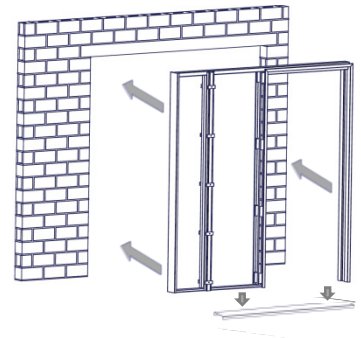
5. Fasten the frame over the floor profile (6) using dowels and screws (not included) to the ground.

6. Insert the Wedi construction panels (10) and fasten with the retaining plates (3).

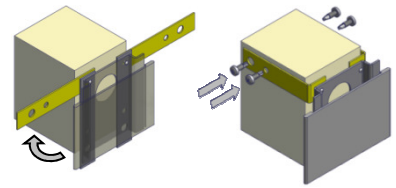
7. Position the flat nail anchors (4) evenly in height and insert between the Wedi construction panels (10) and the stud closure profile (7). Fasten the flat nail anchors (4) using dowels and screws (not included) securely to the brick wall.



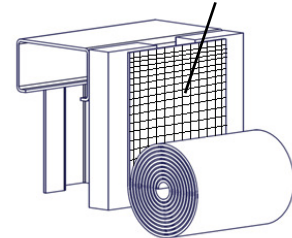
Back rail stop



8. Move the rivet anchor (5) into a horizontal position in the area of the entry profile (2) and bend onto the brick wall. Fasten the rivet anchor (5) using dowels and screws (not included) securely to the brick wall.
9. The sliding door frame (1) should be splayed, in order to maintain the clearance width (LDB) during backfilling. Backfill the sliding door frame (1) with damp standard mortar (approx. 1:4, acc. to DIN 1053-1). Make trowel cuts next to the frame to avoid cracking in the wall. Remove any mortar splatters from the sliding door frame (1) after backfilling.
10. Cover the retaining plates (3) as well as the transitions from the sliding door frame (1) to the wall with joint reinforcement fabric.



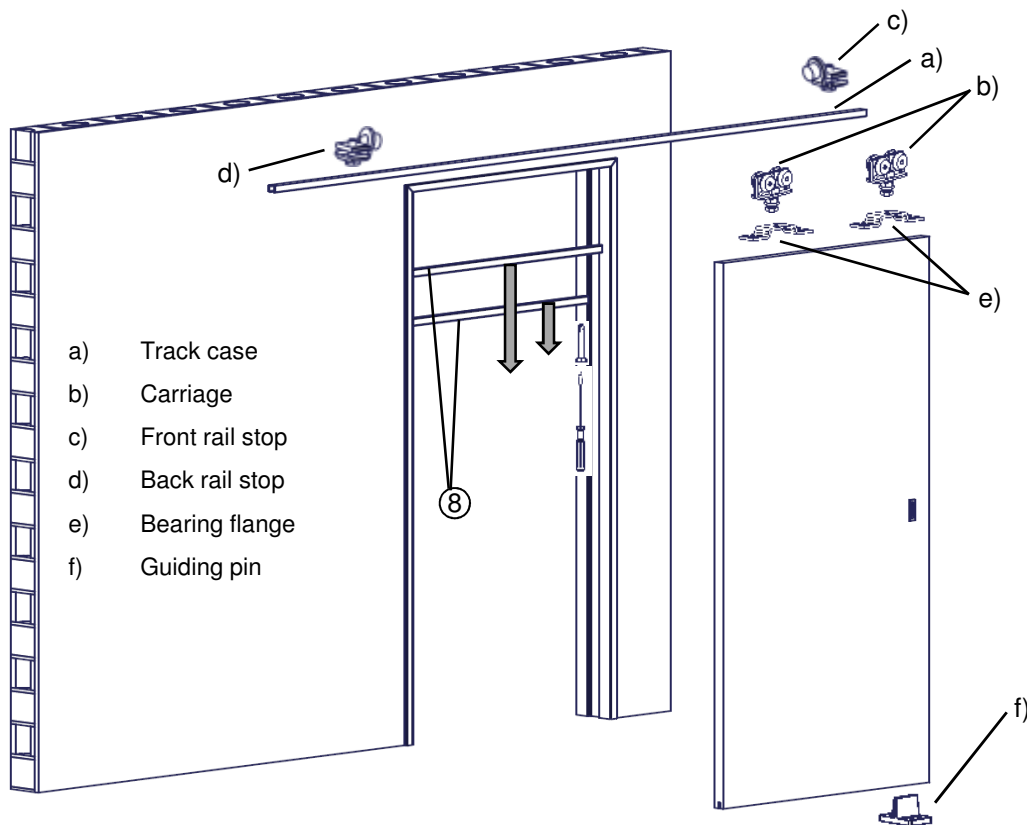
Joint reinforcement fabric



Attention: The Wedi construction panels (10) should be free from dust and treated with commercially available primer.

Mounting the sliding door:

- 1) Remove the inspection cover strip (8).
- 2) Hang the carriage (b) in the track case (a).
- 3) Screw the bearing flanges (e) onto the sliding door leaf.
- 4) Hang the door using the bearing flanges (e) onto the carriage (b) and adjust the door leaf to the right height by turning the adjustment screws. The gap between the door leaf and the frame can be regulated by using the slotted holes of the bearing flanges (e).
- 5) Push the front rail stop (c) into the track case (a) in the desired position.
- 6) Fasten the inspection cover strip (8) back in position with the door open.
- 7) The guiding pin (f) should be aligned with the mounted door leaf and fastened to the floor at the level of the side part.



- a) Track case
- b) Carriage
- c) Front rail stop
- d) Back rail stop
- e) Bearing flange
- f) Guiding pin

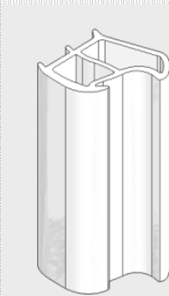
Maintenance Instructions

In order to ensure a proper functioning of the frame, a regular inspection and rectification of any defects identified is recommended.

General condition: Please check the frame and the door leaf for any mechanical or corrosion damage. These types of damage must be rectified!

Seals

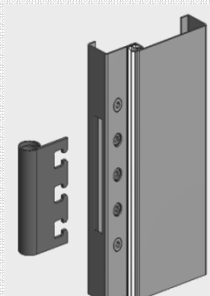
These are to be checked for damage, a proper fit and wear. Damaged seals should be replaced. Dirt on the seals can be removed using commercial detergent.



Elastic hollow chamber seal

Hinge Pockets

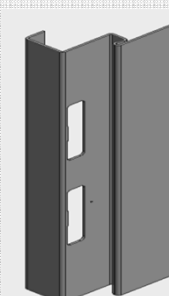
Please control the fastening of the hinges and tighten the screws if necessary. Replace worn parts.



VX hinge pocket with 3 clamping screws and 2 adjustment screws

Latch/Bolt cut-out

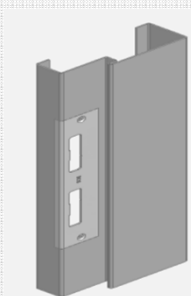
Please check the area of the latch/bolt cut-out for defects. Any damages should be correctly repaired.



Latch/bolt cut-out

Attachments

Please check the fastenings of all attachment parts (striking plates, door closers etc.) and tighten the screws where necessary. Damaged parts should be replaced.



Striking plate

Stainless steel frames

For the care of stainless steel frames please refer to our instructions:

<https://www.bestofsteel.de/en/tools-downloads/care-and-maintenance-instructions/>