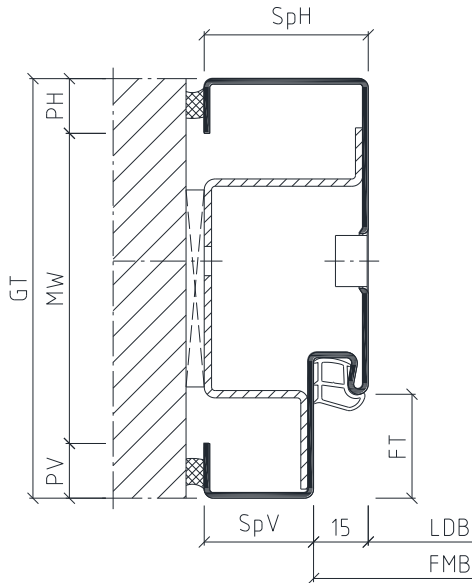


**Included in scope of delivery:**

- Block frame
- 5.2m elastic hollow chamber seal (separate)
- Cover caps (not mounted)



**To be supplied on site:**

- Screws with dowels or frame dowels for brick walls
- Solid padding (e.g. hardwood/plastic/steel plates or blocks) if applicable

- FMB = Frame rebate width
- FT = Rebate depth
- GT = Total profile depth
- LDB = Clearance width
- MW = Receiving opening
- OFF = Finished floor level
- PH = Back backbend
- PV = Front backbend
- SpH = Back architrave
- SpV = Front architrave

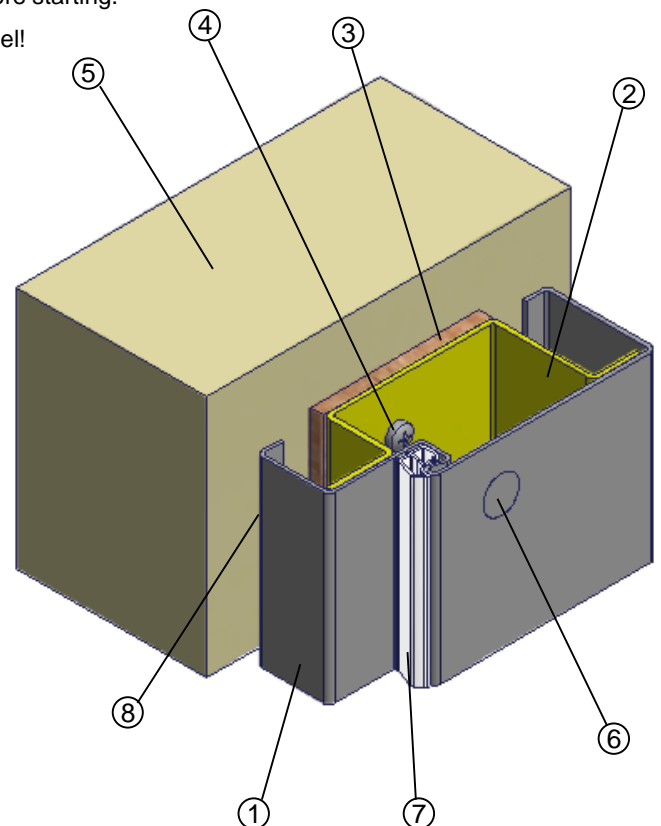
Bsd / Bud for brick walls

**Please note:** Read the installation instructions carefully before starting.

Installation should be carried out by suitably trained personnel!

**Before installation:**

- Check that the steel frame conforms to the planning specifications of the client.
- Check the angularity of the frame.



- (1) Block frame
- (2) Bracket anchor
- (3) Solid padding (to be supplied on site)
- (4) Screws with dowels for brick walls
- (5) Wall / Supporting structure
- (6) Cover cap
- (7) Elastic hollow chamber seal
- (8) Permanently elastic acrylic joint

**Seals**

Do not use nitro-based paint. Cut the seal for the headpiece to length without stretching and without a mitre. Then push the seal into the correct position in the profile. Repeat for the side parts. Clean dirty seals with washing-up liquid.

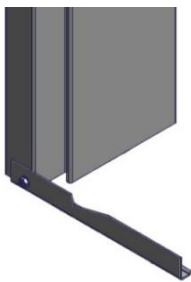
**Permanently elastic acrylic joint**

In order to avoid cracking, joints with a width of 5-8mm should be formed.

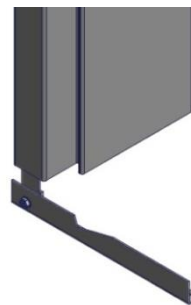
**Spacer rails**

Spacer rails are transportation and installation aids, which are fastened at the bottom of the steel frame to the side parts. The spacer rails can be used as an installation aid in primed frames and should be removed afterwards. The spacer rails in powder coated frames must be removed before installation.

Spacer rail in a primed frame



Spacer rail in a powder coated frame

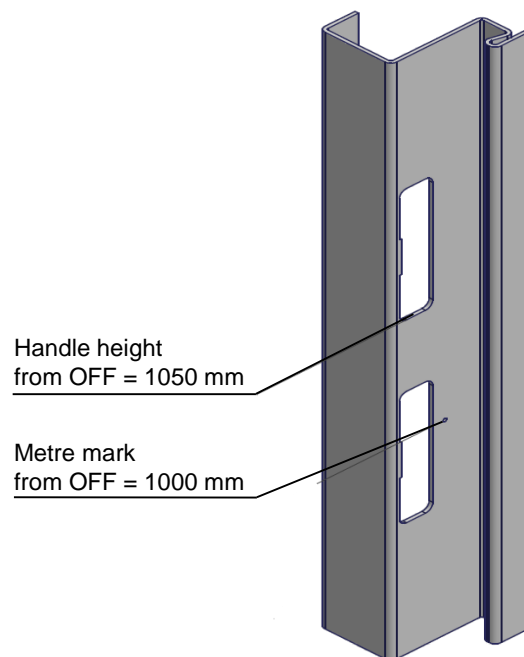
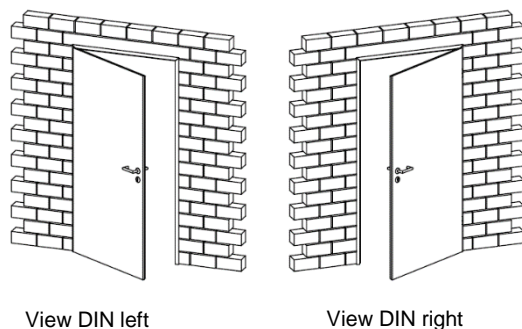


**Please note:**

The profile forms and measurements can differ from those illustrated in the installation instructions. Further installation tips can be found in the TTZ installation guidelines at [www.BestOfSteel.de/en/tools-downloads](http://www.BestOfSteel.de/en/tools-downloads).

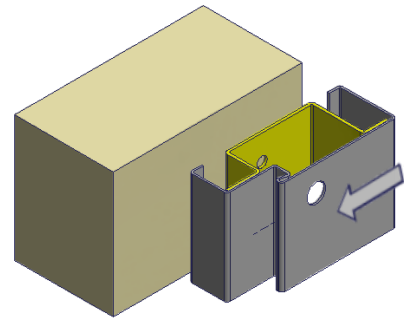
If the frames are used in combination with fire or sound protection door leaves, the mounting parts and installation instructions from the authorisation holder must be followed!

Detail metre mark:



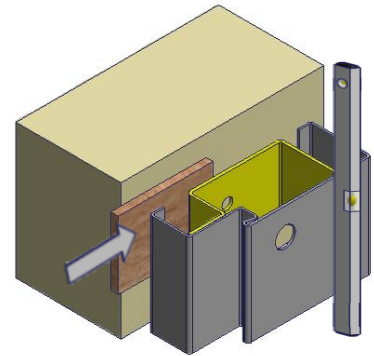
**Attention:** Please take note of the spacer rail information given on page 2 before installation!

1. Position the block frame (1) in the wall opening and align in height according to the metre mark (for metre mark explanation see page 2).



2. Fasten the bracket anchors (2) with the solid padding (3) to the wall (5) and align vertically and horizontally using a spirit level. Temporarily secure the frame using suitable aids, i.e. wedges.

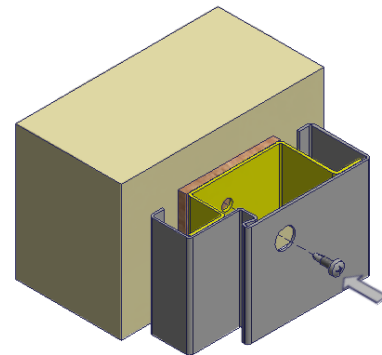
**Recommendation:** Splay the frame, in order to ensure that the clearance width (LDB) is upheld over the total height of the frame.



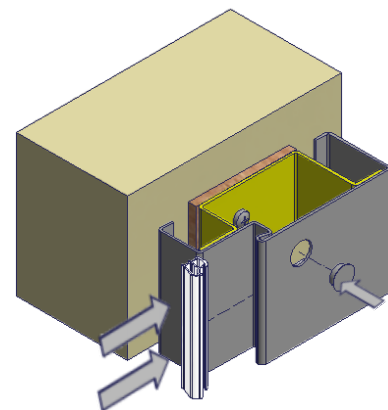
3. Mark the drilling holes for the screws (4) in the aligned block frame (1). Remove the frame (1) and drill holes where marked and insert dowels. Then put the block frame (1) back into position, align and fasten.

4. Close the screw holes in the block frame (1) using the covering caps (6).

A permanently elastic acrylic joint (8) between the wall and the architrave can be formed once the frame paint is completely dry. For further information see page 2.



5. Insert the elastic hollow chamber seal (7). When installing the hinges, follow the instructions given on the seal packaging.



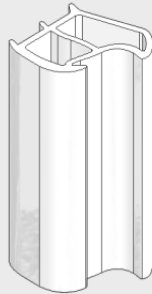
## Maintenance Instructions

In order to ensure a proper functioning of the frame, a regular inspection and rectification of any defects identified is recommended.

**General condition:** Please check the frame and the door leaf for any mechanical or corrosion damage. These types of damage must be rectified!

### Seals

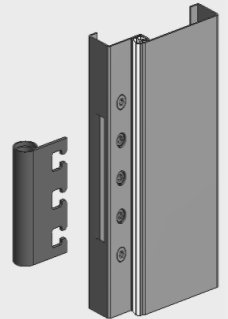
These are to be checked for damage, a proper fit and wear. Damaged seals should be replaced. Dirt on the seals can be removed using commercial detergent.



Elastic hollow chamber seal

### Hinge pockets

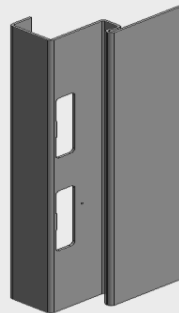
Please control the fastening of the hinges and tighten the screws if necessary. Replace worn parts.



VX hinge pocket with 3 clamping screws and 2 adjustment screws

### Latch/Bolt cut-out

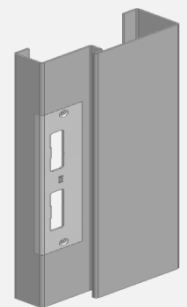
Please check the area of the latch/bolt cut-out for defects. Any damages should be correctly repaired.



Latch/Bolt cut-out

### Attachments

Please check the fastenings of all attachment parts (striking plates, door closers etc.) and tighten the screws where necessary. Damaged parts should be replaced.



Striking plate

### Stainless steel frames

For the care of stainless steel frames please refer to our instructions:  
<https://www.bestofsteel.de/en/toolsn-downloads/care-and-maintenance-instructions/>