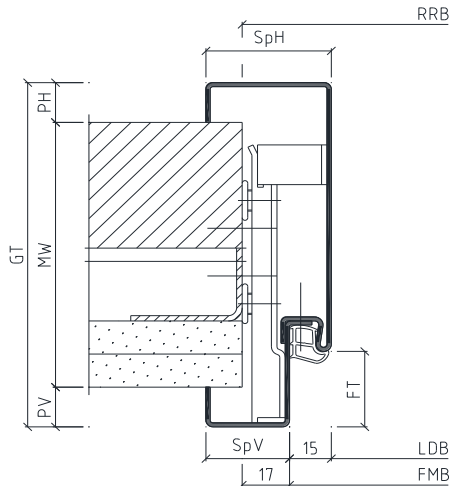


Included in scope of delivery:

- 2 part split frame Duo 15Z
- 5.2m elastic hollow chamber seal (separate)
- Levelling anchors with levelling screws (mounted)



Duo 15Z for stud / brick walls

To be supplied on site:

- Drilling screws for stud walls
- Screws with dowels or frame dowels for brick walls

- FMB = Frame rebate width
- FT = Rebate depth
- GT = Total profile depth
- LDB = Clearance width
- MW = Receiving opening
- OFF = Finished floor level
- PH = Back backbend
- PV = Front backbend
- RRB = Structural wall opening width
- SpH = Back architrave
- SpV = Front architrave

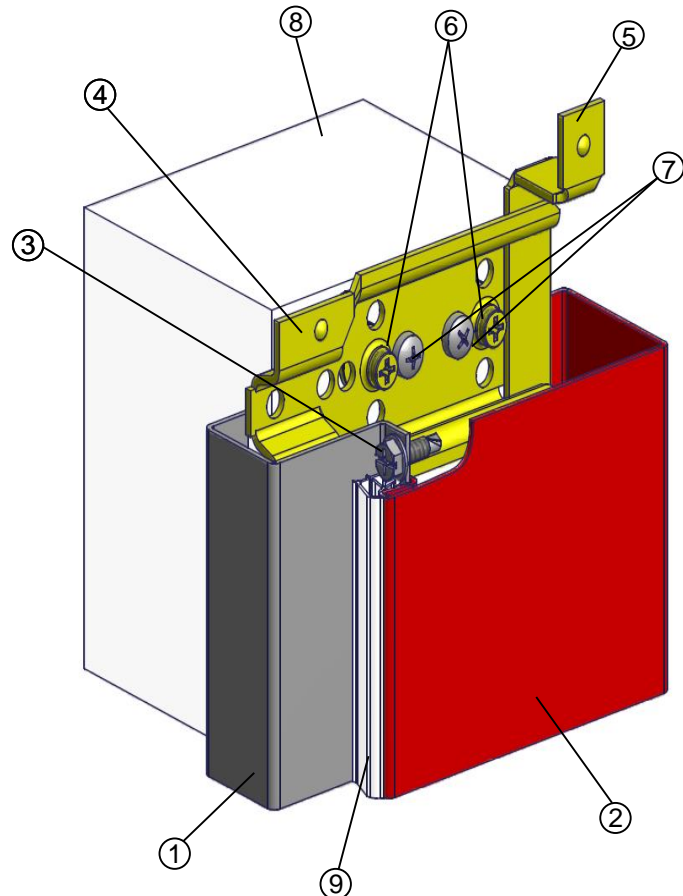
Please note: Read the installation instructions carefully before starting.

Installation should be carried out by suitably trained personnel!

Before installation:

- Check that the frame conforms to the planning specifications of the client.
- Check the angularity of the frame.

- (1) Front part of frame
- (2) Back part of frame
- (3) Drilling screw
- (4) Levelling anchor
- (5) Guiding anchor
- (6) Levelling screws (2 per anchor)
- (7) Drilling screws for stud walls, screws with dowels for brick walls (2 per anchor, to be supplied on site)
- (8) Wall / Supporting structure
- (9) Elastic hollow chamber seal



These installation instructions do not include static information.

Best Of Steel | 1

Seals

Do not use nitro-based paint. Cut the seal for the headpiece to length without stretching and without a mitre. Then push the seal into the correct position in the profile. Repeat for the side parts. Clean dirty seals with washing-up liquid.

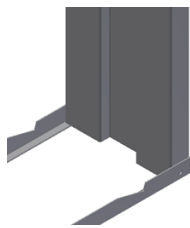
Permanently elastic acrylic joint

In order to avoid cracking, joints with a width of 5-8mm should be formed.

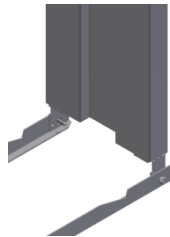
Spacer rails

Spacer rails are transportation aids, which are fastened at the bottom of the steel frame to the side parts. In primed frames they can be used as an installation aid and then removed directly after installation. In powder coated frames the spacer rails must be removed before installation.

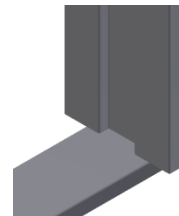
Spacer rail of a primed frame



Spacer rail of a powder coated frame



Transportation guard of all frames

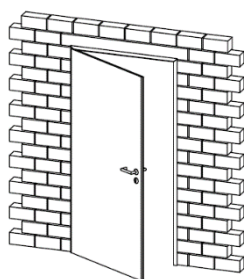


Please note:

The profile forms and the measurements can differ from those illustrated in the installation instructions.

If the frames are used in combination with fire or sound protection doors, the installation and fittings instructions of the authorisation owner must be followed!

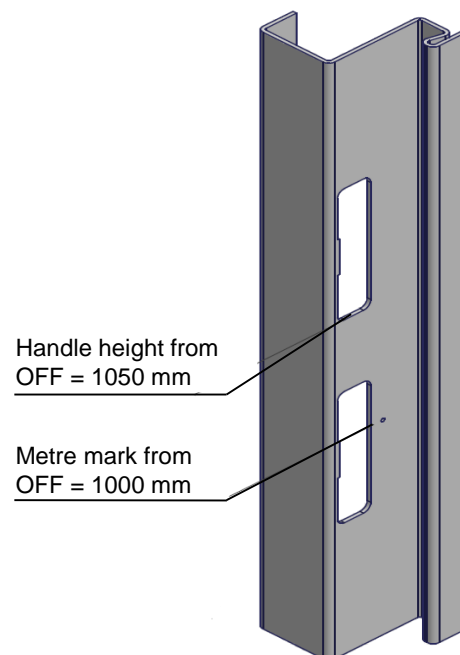
Detail metre mark:



View DIN left



View DIN right

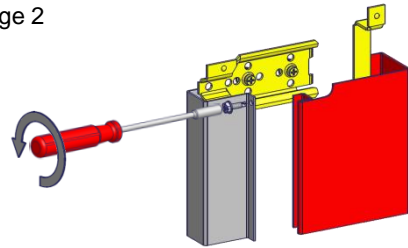


Handle height from
OFF = 1050 mm

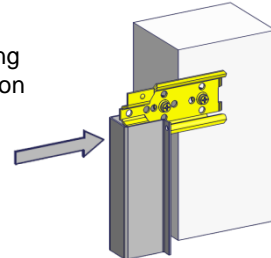
Metre mark from
OFF = 1000 mm

Attention: Please take note of the spacer rail information given on page 2 before installation!

1. The frame is delivered pre-assembled. Remove the drilling screws (3) connecting the front (1) and back part (2) of the frame using a cross tip screwdriver and pull the two frame parts apart.

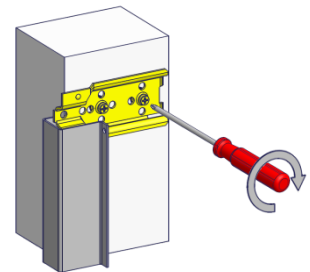


2. Insert the front part of the frame (1) into the wall opening and align according to the metre mark. If necessary, enlarge the opening for the mortar protection cover and the hinge pockets (see page 2 for further information about the metre mark).



3. Align the front part of the frame (1) using the levelling screws (6) in the centre. Check the perpendicular and horizontal alignment using a spirit level.

Important: At least two threads of the levelling screws (6) must grip the anchor (4). Backfilling of a Duo 15Z is not necessary.

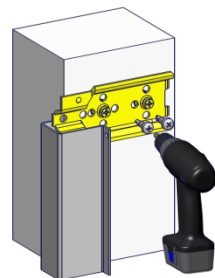


4a. Stud walls:

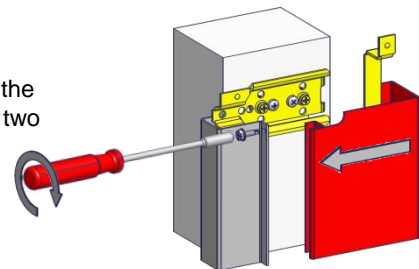
Join the aligned front part of the frame (1) to the stud wall support by inserting the drilling screws (7) through the holes provided in the levelling anchor (4) (2 screws per anchor).

4b. Brick walls:

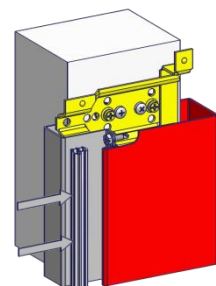
Mark the position of the given holes in the levelling anchor (4) on the wall (8). Remove the frame front part (1), drill the holes where marked and insert the dowels. Finally, reinsert the front part of the frame (1) in the wall opening and fasten.



5. Place the frame back part (2) carefully into position, making sure that the guiding anchor (5) engages with the levelling anchor (4). Connect the two frame parts in the rebate with drilling screws (3).



6. Once the paint is dry, insert the elastic hollow chamber seal (9), thus covering the drilling screws (3) in the rebate. When installing the hinges, follow the instructions given on the seal packaging.



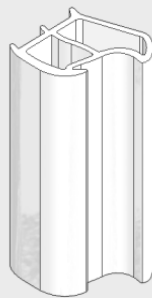
Maintenance Instructions

In order to ensure a proper functioning of the frame, a regular inspection and rectification of any defects identified is recommended.

General condition: Please check the frame and the door leaf for any mechanical or corrosion damage. These types of damage must be rectified!

Seals

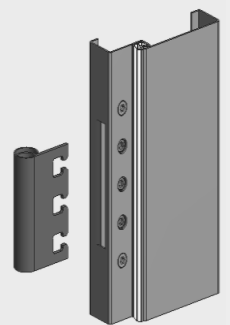
These are to be checked for damage, a proper fit and wear. Damaged seals should be replaced. Dirt on the seals can be removed using commercial detergent.



Elastic hollow chamber seal

Hinge pockets

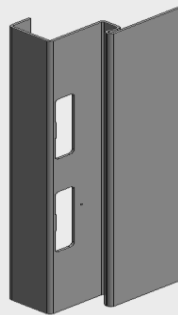
Please control the fastening of the hinges and tighten the screws if necessary. Replace worn parts.



VX hinge pocket with 3 clamping screws and 2 adjustment screws

Latch/Bolt cut-out

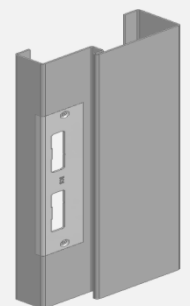
Please check the area of the latch/bolt cut-out for defects. Any damages should be correctly repaired.



Latch/Bolt cut-out

Attachments

Please check the fastenings of all attachment parts (striking plates, door closers etc.) and tighten the screws where necessary. Damaged parts should be replaced.



Striking plate

Stainless steel frames

For the care of stainless steel frames please refer to our instructions:
<https://www.bestofsteel.de/en/tools-downloads/care-and-maintenance-instructions>