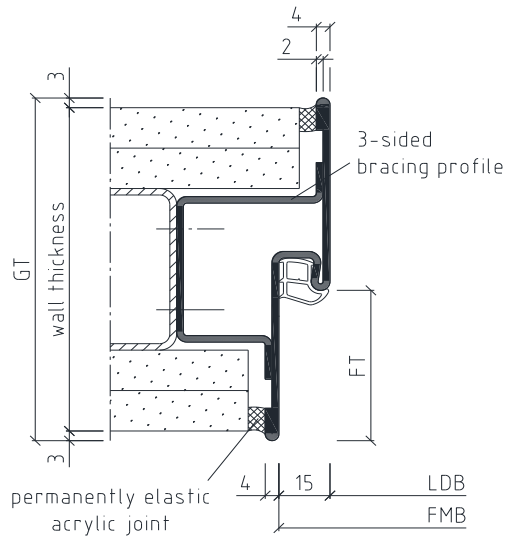


Included in scope of delivery:

- Sino frame with 3 sided bracing profile
- Elastic hollow chamber seal (separate)

To be supplied on site:

- Drilling screws of at least 5.2mm
- Permanently elastic acrylic



- FMB = Frame rebate width
- FT = Rebate depth
- GT = Total profile depth
- LDB = Clearance width
- MW = Receiving opening
- OFF = Finished floor level
- PH = Back backbend
- PV = Front backbend
- SpH = Back architrave
- SpV = Front architrave

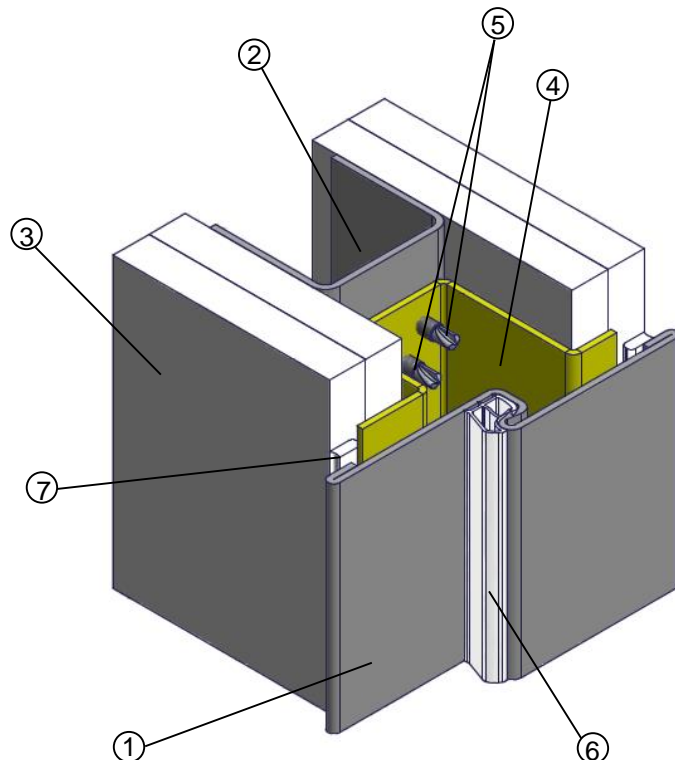
osd for stud walls

Please note: Read the installation instructions carefully before starting. Installation should be carried out by suitably trained personnel!

Before installation:

- Check that the steel frame conforms to the planning specifications of the client
- Check the angularity of the frame

- (1) Sino frame
- (2) Reinforced 2mm UA profile
- (3) Plasterboard
- (4) 3 sided bracing profile
- (5) Drilling screws, min. 5.2mm
- (6) Elastic hollow chamber seal
- (7) Permanently elastic acrylic joint



BOS recommends:

Any gaps resulting between the wall and the frame should be closed using acrylic.

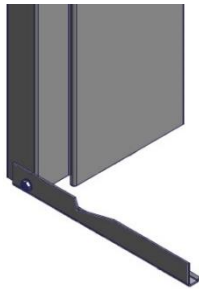
Seals

Do not use nitro-based paint. Push the seal into the headpiece first without a mitre and do not stretch when inserting. Only use soft detergents when cleaning.

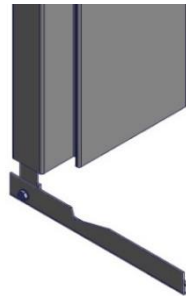
Transport profiles

Transport profiles are transportation and installation aids, which are fastened at the bottom of the steel frame to the side parts. The transport profiles can be used as an installation aid in primed frames and should be removed afterwards. The transport profiles in powder coated frames must be removed before installation.

Transport profile in a primed frame



Transport profile in a powder coated frame

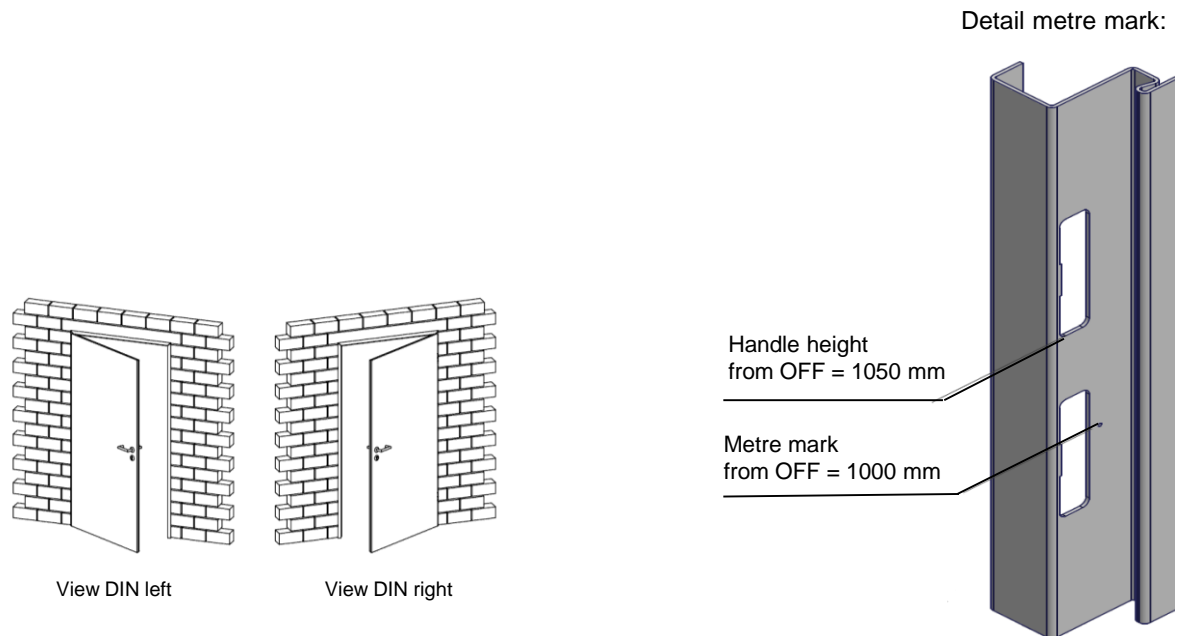


Please note:

The profile forms and measurements can differ from those illustrated in the installation instructions. Further installation tips can be found in the TTZ Installation Guidelines at www.BestOfSteel.de/en/tools-downloads.

If the frames are used in combination with fire and/or sound protection door leaves, the mounting parts and installation instructions from the authorisation holder must be followed!

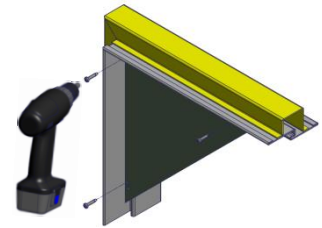
The solid and stud walls or their profiles must be designed in such a way that they can reliably and permanently absorb the static and dynamic forces resulting from the load of the door element used.



The transport packaging is disposed of by BOS Best Of Steel in cooperation with Zentek (within Germany).

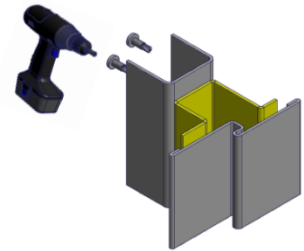
Attention: Please take note of the transport profile information given on page 2 before installation!

1. Remove the support plates which are fastened in the top corners of the Sino frame (1) for stability and dispose.



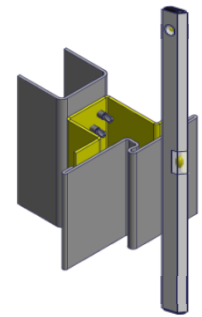
2. Position the floor and ceiling profiles of the stud wall.

Position a vertical UA profile (2), align the Sino frame (1) according to the height of the metre mark and fasten securely via the bracing profile (4) to the UA profile (2) (use at least 8 screws per side, staggered diagonally and evenly spaced over the entire length).



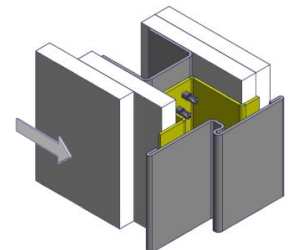
Note: The Sino frame (1) must be positioned centrally on the UA profile (2) (see horizontal section on page 1), so that the plasterboard (3) can be mounted properly later on.

3. Pull the Sino frame (1) apart, so that the clearance width is upheld over the total height of the frame and secure using splays. Position the second UA profile (2) on the opposite side. Align the Sino frame (1) vertically and horizontally using a spirit level and then fasten via the bracing profile (4) securely to the UA profiles (2).

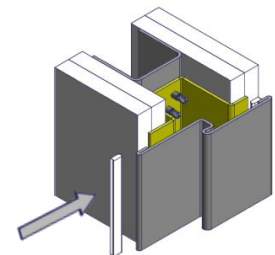


4. Mount the plasterboard (3).

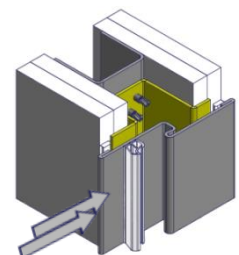
Note: After panelling, remove the splays.



5. Insert the permanently elastic acrylic joint (7) after the final finishing coat of the frame is dry.



The elastic hollow chamber seal (6) should not be inserted until the frame paint is dry. When installing hinges, please follow the instructions on the seal packaging.



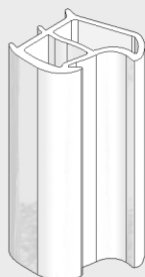
Maintenance Instructions

In order to ensure a proper functioning of the frame, a regular inspection and rectification of any defects identified is recommended.

General condition: Please check the frame and the door leaf for any mechanical or corrosion damage. These types of damage must be rectified!

Seals

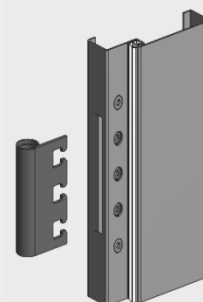
These are to be checked for damage, a proper fit and wear. Damaged seals should be replaced. Dirt on the seals can be removed using commercial detergent.



Elastic hollow chamber seal

Hinge pockets

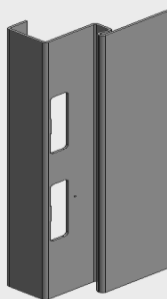
Please control the fastening of the hinges and tighten the screws if necessary. Replace worn parts.



VX hinge pocket with 3 clamping screws and 2 adjustment screws

Latch/Bolt cut-out

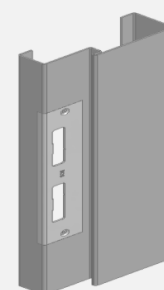
Please check the area of the latch/bolt cut-out for defects. Any damages should be correctly repaired.



Latch/Bolt cut-out

Attachments

Please check the fastenings of all attachment parts (striking plates, door closers etc.) and tighten the screws where necessary. Damaged parts should be replaced.



Striking plate

Stainless steel frames

For the care of stainless steel frames please refer to our instructions:

www.bestofsteel.de/en/tools-downloads