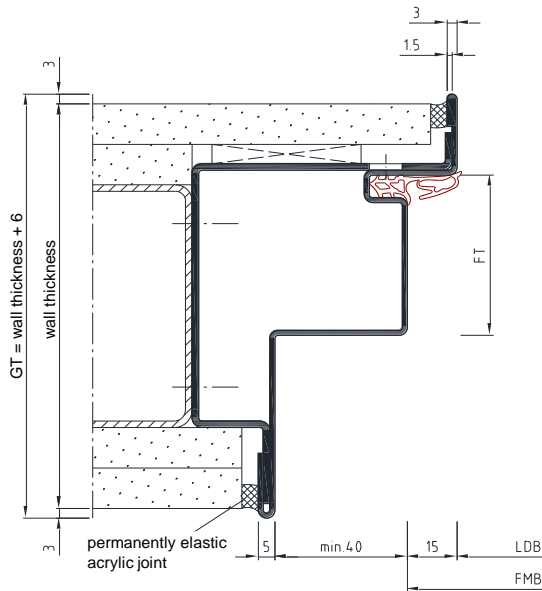


**Included in scope of delivery:**

- SinoPlanar soffit frame with 3 sided bracing profile
- 5.2 m TPE seal (separate)

**To be supplied on site:**

- Fastening for the bracing profile (screws)
- Permanently elastic acrylic



FMB = Frame rebate width  
 FT = Rebate depth  
 GT = Total depth  
 LDB = Clearance width

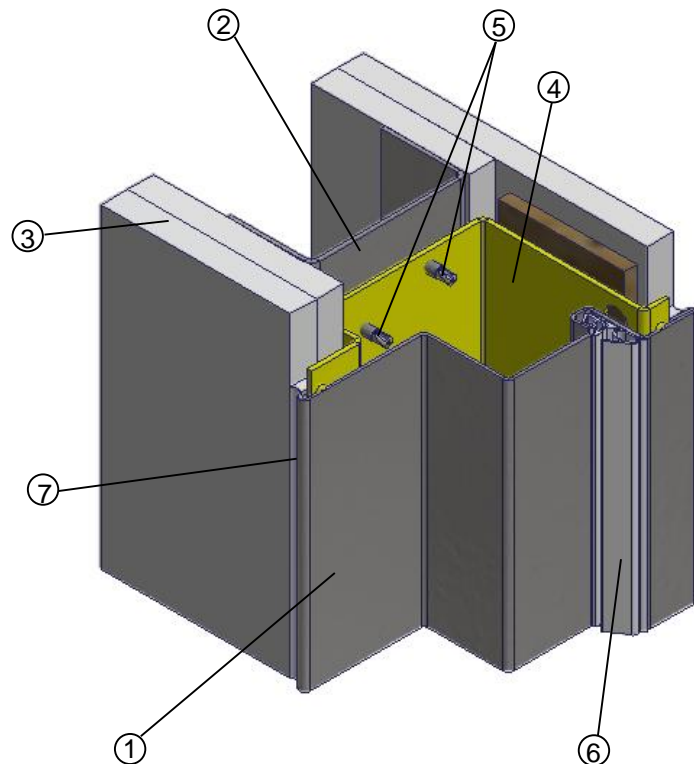
oTUsd for stud walls

**Please note:** Read the installation instructions carefully before starting. Installation should be carried out by suitably trained personnel!

**Before installation:**

- Check that the steel frame conforms to the planning specifications of the client.
- Check the angularity of the frame.

- (1) SinoPlanar soffit frame
- (2) UA profile
- (3) Plasterboard
- (4) 3 sided bracing profile
- (5) Fastening for the bracing profile (screws, not included)
- (6) TPE seal
- (7) Permanently elastic acrylic joint



### Seals

Do not use nitro-based paint. Cut the seal for the headpiece to length without stretching and without a mitre. Then push the seal into the correct position in the profile. Repeat for the side parts. Clean dirty seals carefully using a soft detergent.

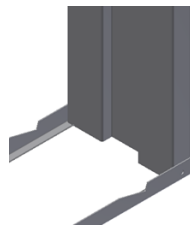
### Permanently elastic acrylic joint

In order to prevent cracking, joints with a width of 5-8mm should be formed.

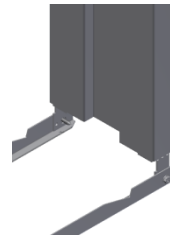
### Transport profiles

Transport profiles are a transport and installation aid which are fastened at the bottom of the steel frame to the side parts. They can be used as an installation aid for primed frames and should be removed directly after installation. With powder coated frames, the transport profiles must be removed before installation.

Transport profiles in primed frames



Transport profiles in powder coated frames

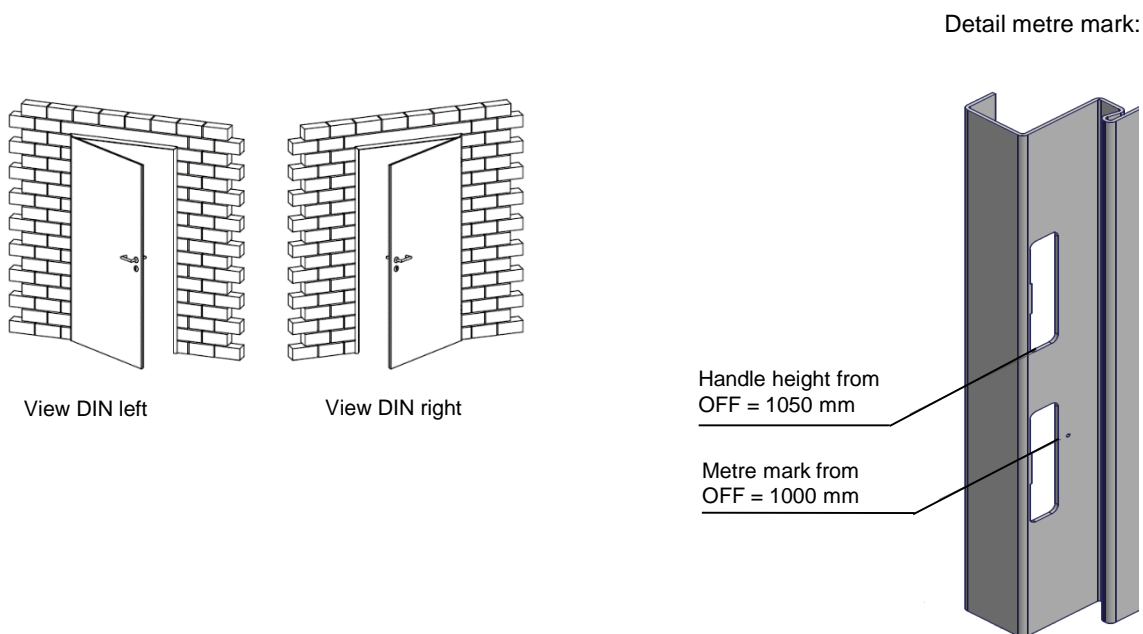


### Please note:

The profile forms and measurements can differ from those illustrated in the installation instructions. Further installation tips can be found in the TTZ Installation Guidelines at [www.BestOfSteel.de/en/tools-downloads](http://www.BestOfSteel.de/en/tools-downloads).

If the frames are used in combination with fire and/or sound protection door leaves, the mounting parts and installation instructions from the authorisation holder must be followed!

The solid and stud walls or their profiles must be designed in such a way that they can reliably and permanently absorb the static and dynamic forces resulting from the load of the door element used.



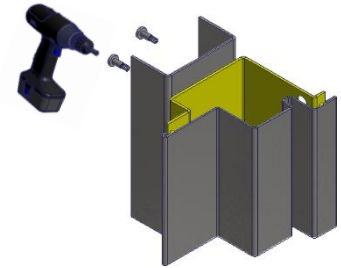
The transport packaging is disposed of by BOS Best Of Steel in cooperation with Zentek (within Germany).

**Attention:** Please take note of the transport profile information given on page 2 before installation!

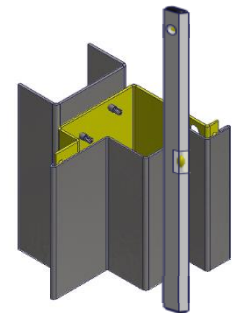
1. Position the floor and ceiling profiles of the stud wall.

Position a vertical UA profile (2), align the SinoPlanar soffit frame (1) according to the height of the metre mark and fasten securely via the bracing profile (4) to the UA profile (2), using at least 8 screws per side (not included), diagonally offset and evenly spaced over the entire length.

**Note:** The SinoPlanar soffit frame (1) must be positioned centrally on the UA profile (2) (see horizontal section on page 1). This is important so that the plasterboard (3) can be mounted properly later on.

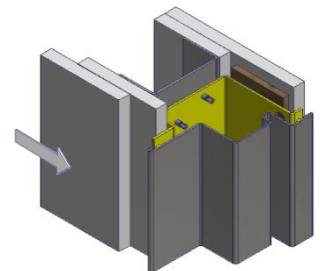


2. Pull the SinoPlanar soffit frame (1) apart, so that the clearance width (LDB) is upheld over the entire height of the frame and secure using splays. Position the second vertical UA profile (2) on the opposite side. Align the SinoPlanar soffit frame (1) vertically and horizontally using a spirit level and then fasten via the bracing profile (4) securely to the UA profile (2).

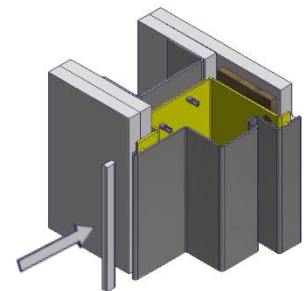


3. Mount the plasterboard (3).

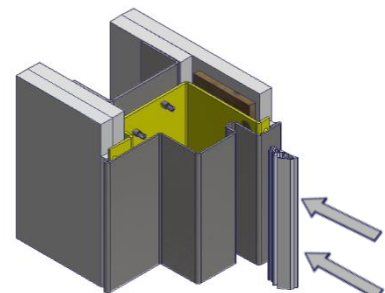
**Note:** After panelling, remove the splays.



4. Insert the permanently elastic acrylic joint (7) after the final finishing coat of the frame is dry. See page 2 for information on correct application.



5. The TPE seal (6) should not be inserted until the frame paint is dry. When installing hinges, please follow the instructions on the seal packaging.



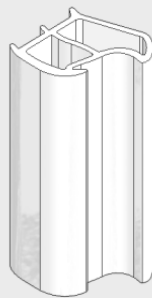
## Maintenance Instructions

In order to ensure a proper functioning of the frame, a regular inspection and rectification of any defects identified is recommended.

**General condition:** Please check the frame and the door leaf for any mechanical or corrosion damage. These types of damage must be rectified!

### Seals

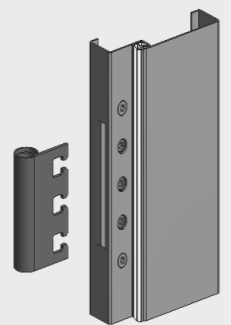
These are to be checked for damage, a proper fit and wear. Damaged seals should be replaced. Dirt on the seals can be removed using commercial detergent.



Elastic hollow chamber seal

### Hinge pockets

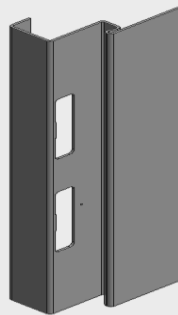
Please control the fastening of the hinges and tighten the screws if necessary. Replace worn parts.



VX hinge pocket with 3 clamping screws and 2 adjustment screws

### Latch/Bolt cut-out

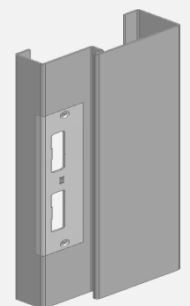
Please check the area of the latch/bolt cut-out for defects. Any damages should be correctly repaired.



Latch/Bolt cut-out

### Attachments

Please check the fastenings of all attachment parts (striking plates, door closers etc.) and tighten the screws where necessary. Damaged parts should be replaced.



Striking plate

### Stainless steel frames

For the care of stainless steel frames please refer to our instructions:  
[www.bestofsteel.de/en/tools-downloads](http://www.bestofsteel.de/en/tools-downloads)