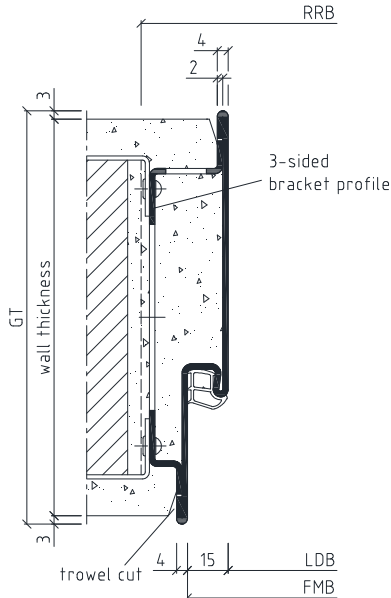


Included in scope of delivery:

- Sino frame with 3-sided bracing profile
- Elastic hollow chamber seal

To be supplied by customer

- Fastening for the rivet anchors (dowel and screws)



osd for MW

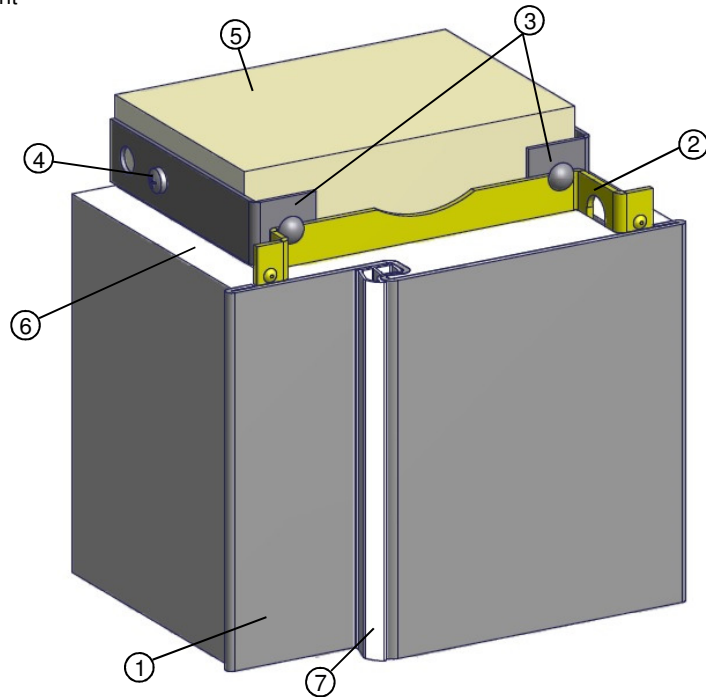
- FMB = Rebate width
- FT = Rebate depth
- GT = Total profile depth
- LDB = Clearance width
- MW = Receiving opening
- OFF = Finished floor level
- PH = Back backbend
- PV = Front backbend
- SpH = Back architrave
- SpV = Front architrave

Please note: Read the installation instructions carefully before starting. Installation should be carried out by suitably trained personnel!

Before installation:

- Check that the steel frame conforms to the planning specifications of the client
- Check the angularity of the frame

- (1) Sino frame
- (2) 3-sided bracing profile
- (3) Rivet anchor
- (4) Fastening for rivet anchor, 2 per anchor (dowel and screw, supplied by customer)
- (5) Brick wall
- (6) Plaster
- (7) Elastic hollow chamber seal



BOS recommends:

Any gaps resulting between the wall and the frame should be closed using acryling.

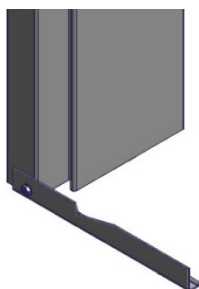
Seals

Do not use nitro-based paint. Push the seal into the headpiece first without a mitre and do not stretch when inserting. Only use soft detergents when cleaning.

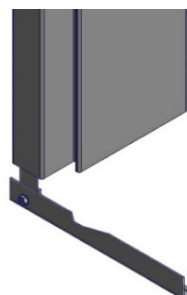
Spacer rails

Spacer rails are transportation and installation aids, which are fastened at the bottom of the steel frame to the side parts. The spacer rails can be used as an installation aid in primed frames and should be removed afterwards. The spacer rails in powder coated frames must be removed before installation.

Spacer rail in a primed frame



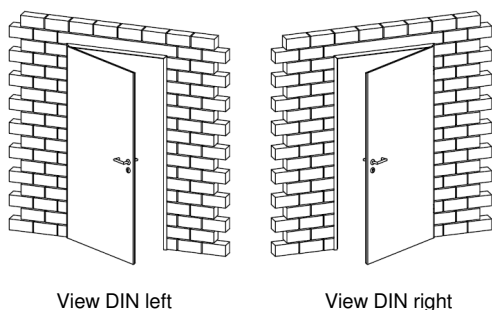
Spacer rail in a powder coated frame



Please note:

The profile forms and measurements can differ from those illustrated in the installation instructions. Further installation tips can be found in the TTZ installation guidelines at www.BestOfSteel.de.

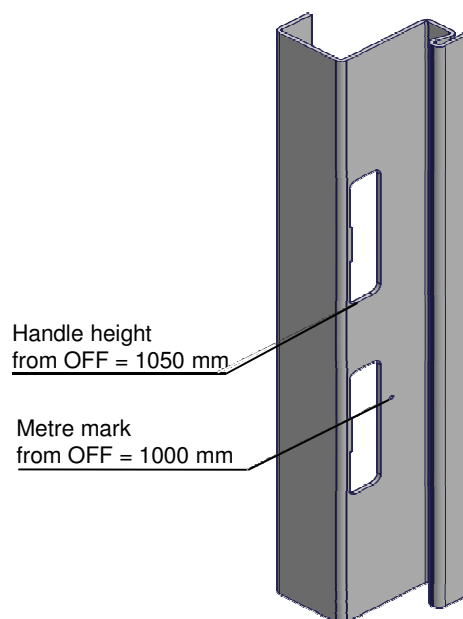
If the frames are used in combination with fire or sound protection door leaves, the mounting parts and installation instructions from the authorisation holder must be followed!



View DIN left

View DIN right

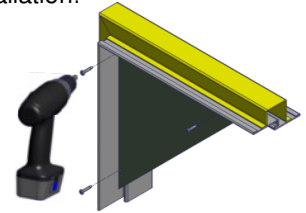
Detail metre mark:



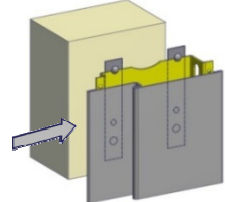
The transport packaging is disposed of by BOS Best Of Steel in cooperation with Zentek (within Germany).

Attention: Please take note of the spacer rail information given on page 2 before installation!

1. Remove the gussets which are fastened to the corners of the Sino frame (1) for stability and dispose.

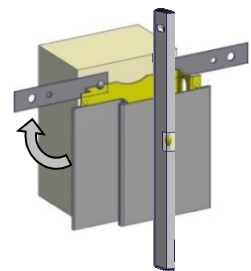


2. Push the Sino frame (1) into the wall opening and align in height according to the metre mark (for metre mark explanation, see page 2).



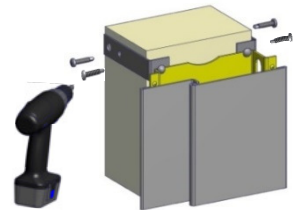
3. Move the rivet anchors (3) fastened to the bracing profile (2) into a horizontal position.

Align the Sino frame (1) vertically and horizontally and fasten. When fastening ensure that an even distance between the wall and frame (1) is upheld (see horizontal section, page 1).

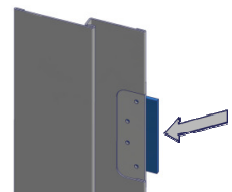


Note: The rivet anchors (3) can be moved to a horizontal position before inserting the Sino frame (1).

4. Pull the Sino frame (1) apart, so that the rebate width measurement is upheld over the total height of the frame. Bend the rivet anchors (3) against the brick wall (5) and fasten securely to the wall (5) using dowels and screws (4).

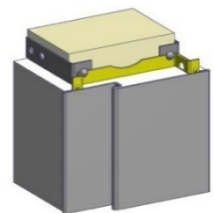


5. Any PE foam padding (used to prevent the mortar from running into the screw threads) protruding in the area of the hinge pockets should be shortened so that it cannot be seen when the frame is finished.



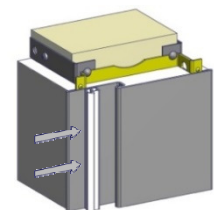
6. Backfill the frame with damp standard mortar (approx. 1:4). Remove the splays and spacer rails (at the bottom of the steel frame) once the backfilling has dried.

Tip: Fasten casing to the sides of the bracing profile (2) and then backfill from the top, by knocking gently on the frame, a full backfilling can be ensured.



Afterwards the wall can be plastered. Make trowel cuts next to the frame to avoid cracking in the wall.

7. Insert the elastic hollow chamber seal (7) only once the frame paint is dry. When installing the hinges, follow the instructions given on the seal packaging.



These installation instructions do not include static information.

Best Of Steel | 3

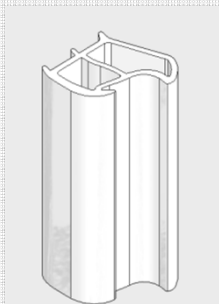
Maintenance Instructions

In order to ensure a proper functioning of the frame, a regular inspection and rectification of any defects identified is recommended.

General condition: Please check the frame and the door leaf for any mechanical or corrosion damage. These types of damage must be rectified!

Seals

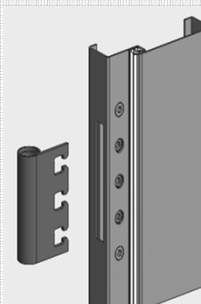
These are to be checked for damage, a proper fit and wear. Damaged seals should be replaced. Dirt on the seals can be removed using commercial detergent.



Elastic hollow chamber seal

Hinge Pockets

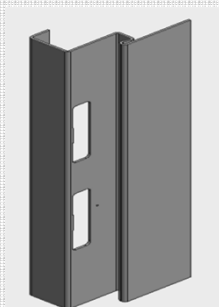
Please control the fastening of the hinges and tighten the screws if necessary. Replace worn parts.



VX hinge pocket with 3 clamping screws and 2 adjustment screws

Latch/Bolt cut-out

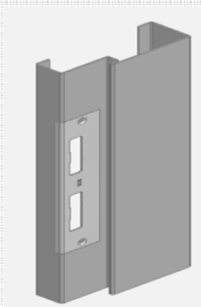
Please check the area of the latch/bolt cut-out for defects. Any damages should be correctly repaired.



Latch/Bolt cut-out

Attachments

Please check the fastenings of all attachment parts (striking plates, door closers etc.) and tighten the screws where necessary. Damaged parts should be replaced.



Striking plate

Stainless steel frames

For the care of stainless steel frames please refer to our instructions:

<https://www.bestofsteel.de/en/tools-downloads/care-and-maintenance-instructions/>