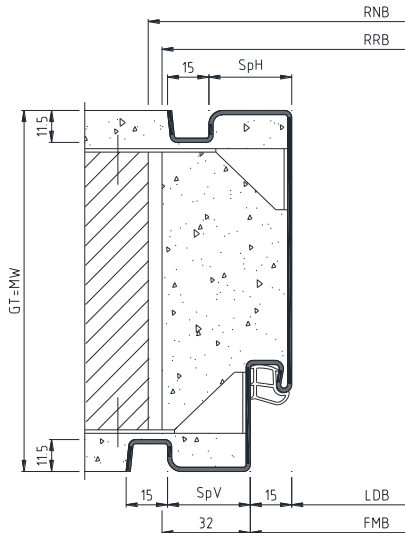


**Included in scope of delivery:**

- Wrap around frame with bending anchors
- 5.2m elastic hollow chamber seal (separate)

**To be supplied on site:**

- Fastening for the bending anchors



- FMB = Frame rebate width
- FT = Rebate depth
- GT = Total profile depth
- LDB = Clearance width
- MW = Receiving opening
- OFF = Finished floor level
- PH = Back backbend
- PV = Front backbend
- SpH = Back architrave
- SpV = Front architrave

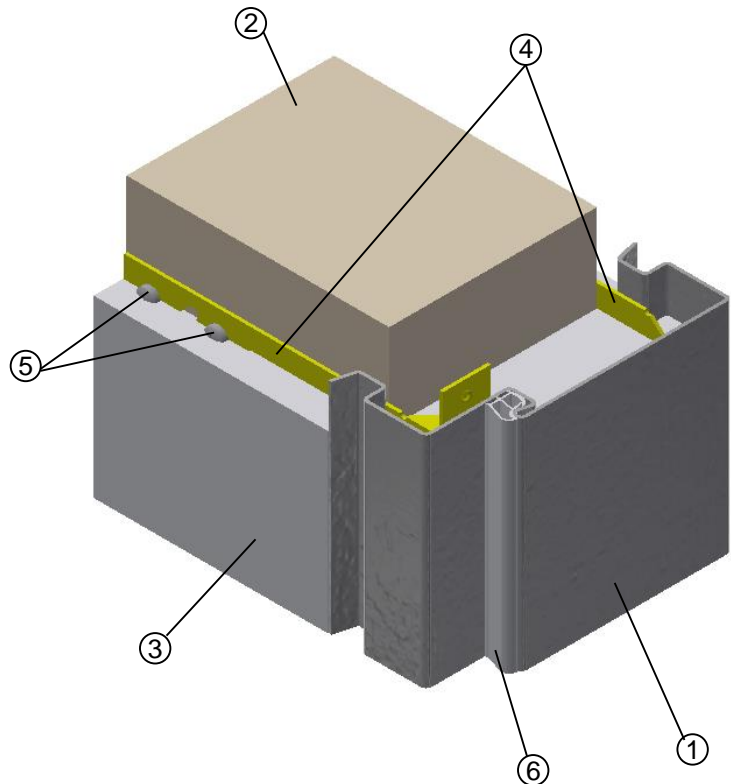
15NzUud for brick walls

**Please note:** Read the installation instructions carefully before starting. Installation should be carried out by suitably trained personnel!

**Before installation:**

- Check that the steel frame conforms to the planning specifications of the client.
- Check the angularity of the frame.

- (1) Wrap around frame with shadow groove
- (2) Brick wall
- (3) Plaster
- (4) Bending anchors
- (5) Fastening for bending anchors
- (6) Elastic hollow chamber seal



**BOS recommends:**

Any gaps resulting between the wall and the frame should be closed using acrylic.

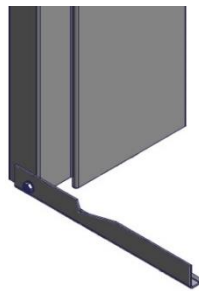
**Seals**

Do not use nitro-based paint. Push the seal into the headpiece first without a mitre and do not stretch when inserting. Only use soft detergents when cleaning.

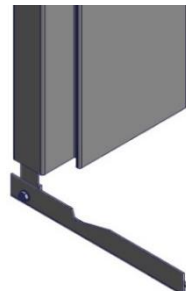
**Transport profiles**

Transport profiles are transportation and installation aids, which are fastened at the bottom of the steel frame to the side parts. The transport profiles can be used as an installation aid in primed frames and should be removed afterwards. The transport profiles in powder coated frames must be removed before installation.

Transport profile in a primed frame



Transport profile in a powder coated frame

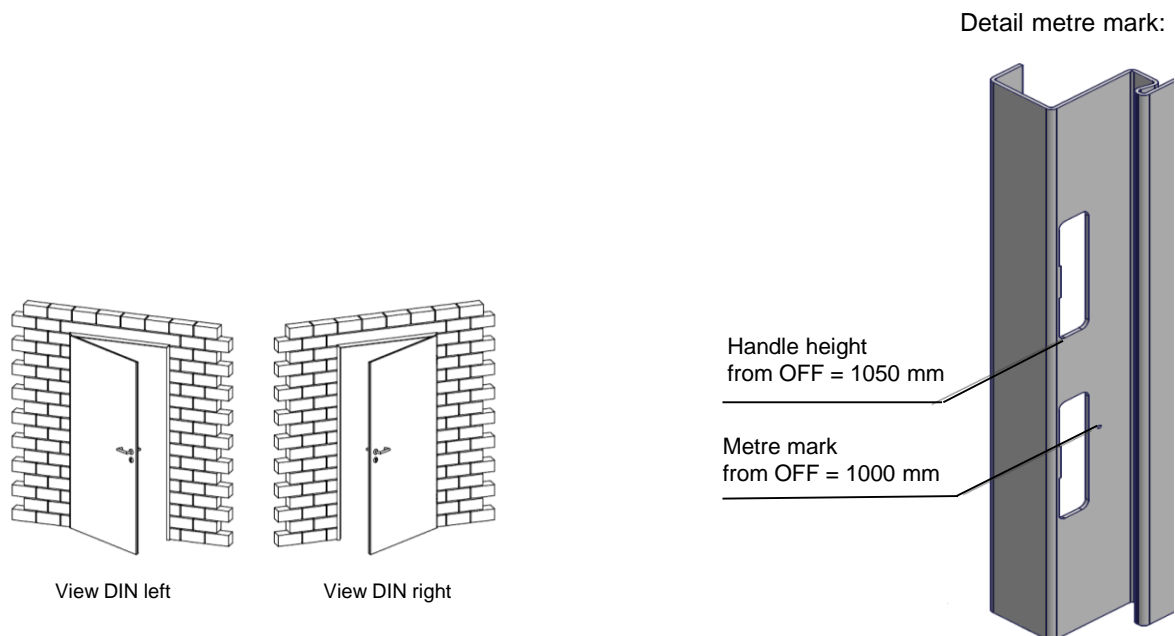


**Please note:**

The profile forms and measurements can differ from those illustrated in the installation instructions. Further installation tips can be found in the TTZ Installation Guidelines at [www.BestOfSteel.de/en/tools-downloads](http://www.BestOfSteel.de/en/tools-downloads).

If the frames are used in combination with fire and/or sound protection door leaves, the mounting parts and installation instructions from the authorisation holder must be followed!

The solid and stud walls or their profiles must be designed in such a way that they can reliably and permanently absorb the static and dynamic forces resulting from the load of the door element used.

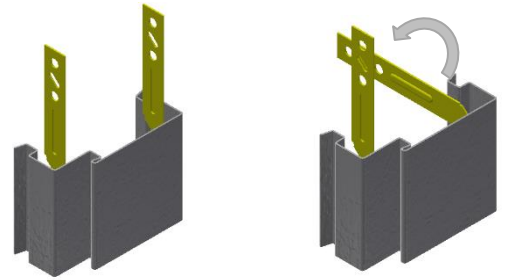


The transport packaging is disposed of by BOS Best Of Steel in cooperation with Zentek (within Germany).

Wrap around frame with shadow groove for brick walls

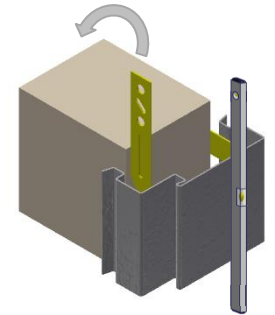
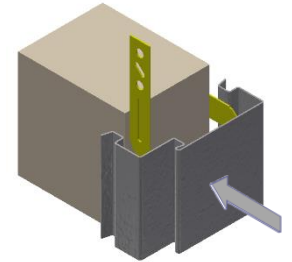
**Attention:** Please take note of the transport profile information given on page 2 before installation!

1. Bend out a bending anchor (4) and bring it into a horizontal position.

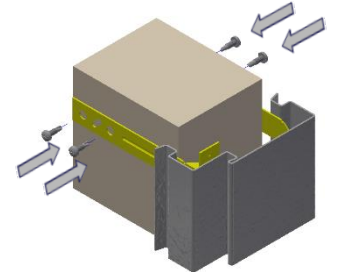


Push the wrap around frame (1) into the wall opening and align in height according to the metre mark (see page 2 for metre mark explanation). Splay the wrap around frame (1) so that the frame rebate width (FMB) is upheld over the entire height of the frame.

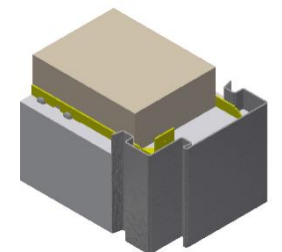
2. Align the wrap around frame (1) horizontally and vertically using a spirit level and fix it in place. When fixing, make sure that the wrap around frame (1) has an even distance to the wall.  
Bend the second bending anchor (4) into a horizontal position.



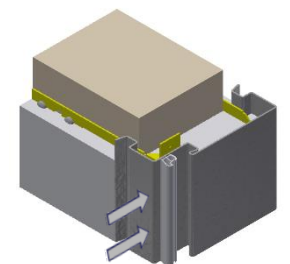
3. Fasten the bending anchors (4) securely to the brick wall (2) using dowels and screws (5) (not included).



4. Backfill the frame with earth-moist standard mortar (approx. 1:4, according to DIN 1053-1).  
Once the backfilling is dry, remove the splays. The wall can then be plastered.



5. Do not insert the elastic hollow chamber seal (6) until the frame paint has dried. Follow the instructions given on the seal packaging when mounting the hinges.



These installation instructions do not include static information.

Best Of Steel | 3

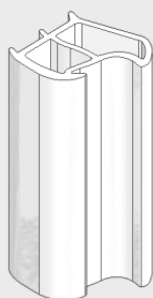
## Maintenance Instructions

In order to ensure a proper functioning of the frame, a regular inspection and rectification of any defects identified is recommended.

**General condition:** Please check the frame and the door leaf for any mechanical or corrosion damage. These types of damage must be rectified!

### Seals

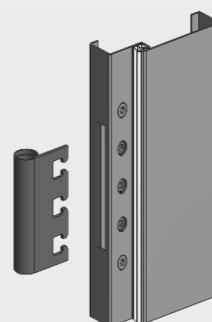
These are to be checked for damage, a proper fit and wear. Damaged seals should be replaced. Dirt on the seals can be removed using commercial detergent.



Elastic hollow chamber seal

### Hinge pockets

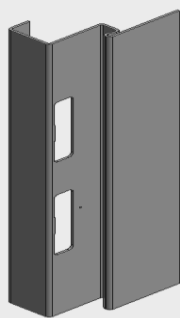
Please control the fastening of the hinges and tighten the screws if necessary. Replace worn parts.



VX hinge pocket with 3 clamping screws and 2 adjustment screws

### Latch/Bolt cut-out

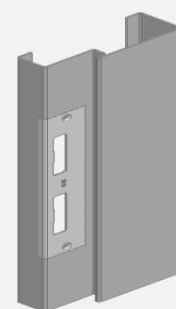
Please check the area of the latch/bolt cut-out for defects. Any damages should be correctly repaired.



Latch/Bolt cut-out

### Attachments

Please check the fastenings of all attachment parts (striking plates, door closers etc.) and tighten the screws where necessary. Damaged parts should be replaced.



Striking plate

### Stainless steel frames

For the care of stainless steel frames please refer to our instructions:  
[www.bestofsteel.de/en/tools-downloads](http://www.bestofsteel.de/en/tools-downloads)